

FELSTED

AUGUST 2020

FOCUS

COMMUNITY MAGAZINE

Features:

Editor's Letter: 3

Clubs: 4/5

Felsted Memorial Hall: 5

WEA: 6

Churches: 7/8

Chairman's Chat: 8

Felsted Parish Council: 9

Marnie's Bees: 10/11

Recipe: 12/13

Cobblers Green: 14/17

Felsted School: 18

Competition Results: 19/21

Beeline for Borage: 22

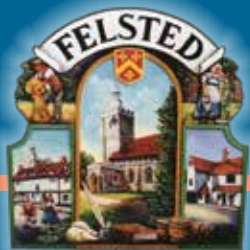
Gardening Tips: 25

Puzzles: 26

Where is it?: 27

Local Services Directory: 29


Trade Directory: 30/31



ISSUE No: 5


Clear Sight Drones

Aerial photography



- * Property
- * Roof surveys
- * Boundary identification

contact@clearsightdrones.com
www.clearsightdrones.com
01371 820330 / 07979 054654



Compliment Slips • Business Cards • Parish Magazines • Scrap Pads
 Invoices/Estimates/Contracts • NCR Sets, Pads, Books • Christmas Cards • Draw Tickets • Envelopes

01787 469628



Paul Clark Printing
LIMITED

Email: sales@paulclarkprint.co.uk
Web: www.paulclarkprint.co.uk

All of our printing is produced using Carbon Capture paper, helping to create new native woodland and capturing CO2




Helping capture CO2 and plant trees

Business Packs • Loyalty Cards • Invitations • Orders of Service •
 Leaflets • Posters • Menus • Banners • Price Lists • Booklets • Stickers • Labels • Letterheads

www.astragraphic.co.uk


GRAPHIC DESIGN SOLUTIONS TO SUIT YOU...



astragraphic
DESIGN

▼ **07771 898471**
▼ info@astragraphic.co.uk

R. Wheeler
ROOFING SERVICES



TILING | SLATING | LEADWORK | GUTTERING | FLAT ROOFS | CHIMNEYS | ALL REPAIRS

| Free Estimates |
 | All work guaranteed |
 | Over 30 Years Experience |
 | Honest & Expert Advice |

Home: 01371 811308
Mobile: 07951 349837
RWheelerRoofing@gmail.com

Note from the Editor

This is the 5th issue of Felsted Focus and thanks to all of you I am getting some great stories about the local area and its residents. Please keep sending them in, along with any suggestions or ideas for content.

The art competition has been great and I am so glad that I wasn't judging as it was a difficult job. From a personal point of view, you were all winners and seeing all the entries put a smile on my face. The cover picture is 'A bug from the garden' by 5-year-old Nicole. You can see the other winners and entries inside; we will certainly be using some of them in future issues, keep an eye out for them.

I understand that some homes in the parish are not getting deliveries of Focus. We are using a small company to do this but with such a large parish there is not time to cover all areas completely. The team will carry on putting copies in the village shop for anyone to pick up, although they go quickly. It is a free magazine but costs of printing and delivery have to be covered.

For this reason, if there are any volunteers that can help deliver to localised areas please let me know. On a more upbeat note: The summer is still with us, more places are opening up, we are seeing people we haven't in a long while and I have a great article ready for the September issue.



Editorial Team:

Janice Ratcliffe
felstededitor@gmail.com
Margaret Attwood
Sarah Gale
Richard Freeman
Roy Ramm

Graphic design and layout:

David Hardy
Astragraphic Design
info@astragraphic.co.uk
www.astragraphic.co.uk

Print:

Paul Clark Printing

Parish Council:

01371 823071
www.felsted-pc.gov.uk

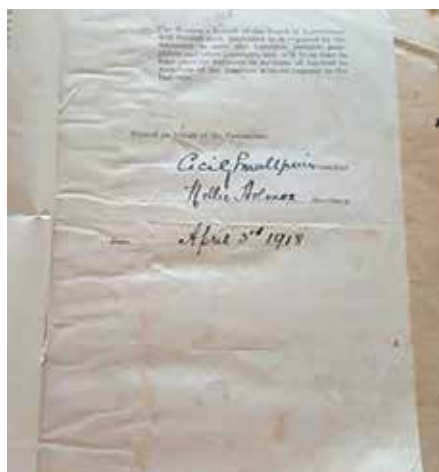
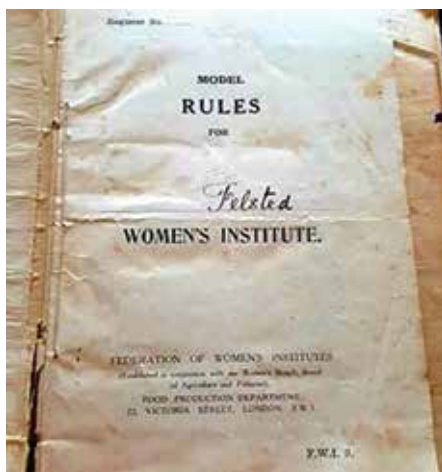
The front cover picture

*Art Competition Winner, By Nicole Powell (aged 5)
Bug from the garden (interpreted by a five year old!)*

Felsted WI

Members' safety is our top priority therefore we are still reviewing the best time to re-commence our meetings. As it is not currently possible to plan for the future, it is perhaps interesting to look back at our history. The Women's Institute was founded by Adelaide Hoodless in 1897 in Stoney Creek, Ontario in Canada, as a community-based organisation for women. The first WI meeting in Great Britain took place in 1915 in Anglesey in Wales. It had two clear aims: to revitalise rural communities and to encourage women to become more involved in producing food during the First World War.

DID YOU KNOW? The first Felsted WI meeting was held on 3 April 1918 so we are currently the grand old age of 102. The original record book still exists in our archives and notes Cicily Smallpiece as the President and Nellie Holmes as Secretary.



Meetings are the second Wednesday of every month (except August) at 7.45pm in the Memorial Hall. For more information contact Penny Lewis on 07825 312829 / penny717@btinternet.com or Margaret Smith on 01371 822092.

Felsted Friendship Club

Self-isolating means that the club is not currently meeting, however the committee is keeping in telephone contact with members and we hope to gradually meet again soon. On Friday 21st August we will be offering 'Drop in for a cup of tea' at the Memorial Hall - in the car park if hot and sunny, otherwise in the hall from 2.30 - 3.30 pm.

Our September meeting of tea, cakes and chat has been moved to Friday 11th September in the Memorial Hall, although numbers may have to be restricted. The outing planned for September has been cancelled; the November outing is still in the calendar, however this is likely to come with coronavirus restrictions.

Friendship Club details available from Alison Moore 01371 821632 or Sue King 01371 821411.

Felsted Memorial Hall



Hello everyone.

Work on the hall should be finished by early August and the committee look forward to welcoming back our hirers to the updated premises by September, perhaps mid August, subject to Government advice. We constantly receive updates from the Rural Community Council of Essex about sanitising between bookings and how to advise hirers on social distancing. The committee will form a rota for the 'in between' cleaning to support Angela. Contact our booking secretary on 07926 377343 to enquire about hiring.

The Panto script is coming along well, thanks to Rita and team who seem to rattle out the jokes so fast! I do hope we can put on our performances in January. If you want to get involved and join in the fun, just give me a ring.

Hazel Fox



Founded in 1903, the Workers' Educational Association (WEA) is a charity and the UK's largest voluntary sector provider of adult education. With the support of over 400 local branches, 3,000 volunteers, 2,000 part-time tutors and an active membership, the WEA provides high quality, student-centred and tutor-led education for adults from all walks of life. We bring education into the heart of communities, helping people learn whatever they want: from Maths and English to local history.

How could this help you?

There are around 40 WEA branches in Essex, and there is one in Felsted. There are others nearby in Dunmow, Braintree, Shalford, Great Bardfield and Chelmsford. The Felsted WEA branch was founded 47 years ago and offers four courses a year, two in each of the autumn and spring terms. They are held on Monday evenings and Thursday mornings. Themes in recent years have included the historical origins of our myths and legends, the history of China, various aspects of English history in the 17th-19th centuries, popular music and society since the war, and our stately homes and gardens.

The details for our autumn courses are shown in an advert elsewhere in this magazine.

Because of the current situation regarding the Coronavirus, our autumn term lectures will be conducted online via Zoom.

Each course will consist of 10 lectures of one and a half hours.

If you are interested in learning about something new or supplementing your existing knowledge, why not give us a try? Simply use the contact details below if you'd like more information or book a place on a course.

More information will follow in the September edition of Focus.

For further information on the WEA, or to book a course phone 0300 303 3464.

You will need the course ID numbers quoted in advert.

If you have a particular educational requirement, contact eastern.wea.org.uk/ who may be able to direct you to a branch, or a college which works in partnership with the WEA.

We are Britain's best kept secret! Perhaps we should be known as We Educate Adults!

Dick Frost, Chairman of Felsted WEA

Felsted Holy Cross Church

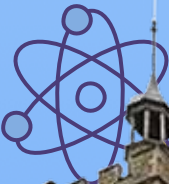


WOW!
9AM SERVICE
IN HOLY CROSS
BACK FROM
SUNDAY 19 JULY



a

A



Details on
www.felstedchurch.org.uk
or Colin ☎ 01371 820242



The United Reformed Church

We are not planning to open in August, but we hope that by September we may be open for worship only.

By this time all safety precautions set down by the government will be in place, assuming no changes have been announced in the meantime.

Services will start at 10.30 am each Sunday, as before lockdown, and in the meantime we will be keeping in touch with all our members with updates.

Hoping that everyone continues to keep safe and well.
God bless.

Diane Denny: 01376 583994

Chairman's Chat

Following advice from the government the decision to reopen play areas was left to the discretion of each Parish Council. Criticism on social media was a hot topic, Felsted residents were understanding but surrounding areas expected that the play areas would be open for visitors.

Maintenance work was due on the play area and some people have questioned why this was not done during the lockdown period. There are several reasons. Firstly, suppliers of the safety materials were closed, safety signs were mandatory and the safety of children was our highest priority. Secondly we were obliged to complete a risk assessment and attend an online safety meeting before we could proceed.



Graham

Graham Harvey
Chairman Felsted Parish Council



Felsted Parish Council

The Parish Office, Stebbing Road, Felsted

clerk@felsted-pc.gov.uk, 01371 823071

In line with government guidelines this play area is now open. The Parish Council is cleaning the equipment once per week and regular safety checks are being carried out.

Please follow the below guidelines for your safety and for the safety of others.

Please report any problems with this play area using the contact details above

STAY ALERT ▶ CONTROL THE VIRUS ▶ SAVE LIVES



Be aware of the need for social distancing and give other playground users space.

Do NOT use the play area if you or a member of your family have coronavirus symptoms or are self-isolating.



**Sanitise
your hands**

Remember to use hand sanitiser regularly and consider wiping playground equipment before use.

Remind children not to put their mouths on equipment or to put their hands near their faces.



If this play area is busy, please come back later.

You have a responsibility for your and your families safety.



**No food
or drink**

Do not consume food or drink in the play area.



Please dispose of your litter properly or take it home. This includes the disposal of gloves, face masks or any other PPE.

STAY ALERT ▶ CONTROL THE VIRUS ▶ SAVE LIVES

Marnie's Bees

HAVE GOT NEWS
FOR YOU



Photo: Roy Ramm

This summer long-time Felsted resident Marnie Fillingham will share her garden with around 35,000 bees. In return for her hospitality the bees will deliver around 11 kilos of delicious honey. Marnie is one of six members of the British Beekeepers Association keeping hives in Felsted.

One queen, hundreds of male drones and thousands of female worker bees make up the population of the hive. The bees navigate and fly astonishing distances collecting pollen from flowers and foliage for food, but usually remain within a mile of the hive.

Between them, a strong colony will fly the equivalent distance from the Earth (CM6 in this case) to the Moon every day or 55,000 miles to make a pound of pure honey, known to the Greeks as the food of the Gods.

Marnie's Bees

As amazing as these little creatures are, they can't make toast! That's where we come in. Bees produce up to three times more honey than they need, providing us with natural and healthy anti-bacterial food rich in antioxidants.

When the fields are bright yellow with rape, pollen levels are high (as hay fever sufferers will confirm) and therefore the honey is particularly plentiful, but the honey also sets so hard the bees can't use it in winter and need sugar syrup to support their colony. A good floral mix is best for the bees, so the more flowers we plant the better for local beekeepers and the better our chance of being able to buy pure ethically sourced local honey.

Do beekeepers get stung? Despite the PPE, keepers do get stung. Once the bee has stung, it dies: some comfort when you're nursing a sting or two!

Roy



Photos: Roy Ramm



Recipes

CHILLI FEST

For many years we grew chillies and froze the inevitable glut. Now I make two very simple, delicious recipes with our excess produce. Alternatively, you can buy chillies inexpensively in bulk from Saffron Walden and other markets. The chillies in oil are delicious on pizza, with salads, cold meats and stirred into tomato sauces. Chilli jam is the best ever accompaniment to cheese. Store filled jars in a cool place.

EASY PEASY CHILLIES IN OIL

200g red chillies finely sliced

30g salt

350ml cups white vinegar

250ml (approx.) virgin olive oil

1. Mix the salt and white vinegar together in a glass or ceramic bowl.
2. Add chilli slices and seeds to the brine. Stir and leave for 24 hours.
3. Drain the chillies well. Pack into 2-3 small sterilised jars
4. Pour over the oil until well covered, shaking to remove any air bubbles.

GREEN CHILLI JAM

150g green chilli peppers, deseeded and roughly chopped

150g yellow or red peppers, cored, deseeded and roughly chopped

1kg jam sugar

600ml cider vinegar

1. Finely chop peppers and chillies in a food processor.
2. Dissolve the sugar in the vinegar over a low heat, without stirring.
3. Add the chilli and pepper mixture to the pan; boil for 10 minutes.
4. Take the pan off the heat and allow jam to cool – it should start to go syrupy.
5. Pour the setting jam into 3 sterilised jars and seal them tightly.



Cobblers Green

Cobblers Green, one of Felsted's 15 hamlets, is located between Causeway End (sometimes historically referred to as "Crossways") and Cock Green. Around 150 years ago it is thought to have comprised 8 dwellings, two farm Houses (Potash Farm and what is now named Beacons), four thatched cottages, one of which (now Brook Cottage) formed a pair, and what is thought to have been two additional cottages located behind Beacons (shown on maps of 1875) but of which there is no longer any visible evidence.

Cobblers Green has an interesting history and, surprisingly for a small hamlet, which is now a fairly sleepy and quiet location, appears to have been a rather active settlement in terms of Felsted businesses a hundred or so years ago.

The map of 1875 (as detailed centre pages) also shows a "Smithy", located to the east of Edward House. Records show that Edward House was built in approximately 1864 and that by 1892 the owner was a Mr. Samuel Plowman Day Jnr.

Mr Day appears to have been a most entrepreneurial gentleman, as his business cards from the time (shown below right) suggests that he was everything from a coach builder and wheelwright to undertaker, bell hanger, stove & range hot water fitter, general smithy, gas fitter, sign writer and that he even repaired cycles!

Records of the sale of Edward House to Mr Day show that the site then included not only the dwelling house but also a smithy, a coach-builders workshop, stables, paint-shop and a saw pit. Other interesting records reveal that the house also had a "jug licence" (an out-door beer license), presumably as an off-site agent for Mr. Ridleys Brewery!

It is not known what became of the coach-builders workshop, although we do know that Mr Day emigrated with his young family to Western Australia in around 1904. Fortunately, two of his grandchildren, whilst visiting Felsted several years ago in order to investigate his history and former home, supplied the photographs right which, until then, were not known to exist.

The picture of the coach-builders workshop below (now long gone) was taken looking across the green and next to the pond, at the end of the byway that leads to Potash Farm.

Richard

Cobblers Green



Two of the many interesting documents available on-line about Felsted which include details of Cobblers Green are:

1. Take a walk through Felsted – A trip down memory lane – From the 1901-2001 Census.

www.recordingtuttlesfordhistory.org.uk/felsted/awalkthroughfelstedin1901.pdf

2. 1875 surveyed map of Felsted

www.maps.nls.uk/view/102341891



B.M. 243

Smith & Co. 243-5

Three Horse Shows
(T. H.)

Oxney's Farm

Wood's Farm

Kiln

Clay
Brick Field

S

Acres
6426.3

Cleveland's Farm

1474

Cock Green

Windmill
(Case)

PL 329.6

2245

B.M. 217

bler's Green

Taylor's Farm

Bread Lands

B.M. 105-9

202

Pondpark Farm

200

Felsted School Embraces Lockdown

Felsted School has embraced the need to adapt during lockdown both from an educational perspective and in support of our community. Boarding houses provided accommodation for a number of paramedics training with the East of England Ambulance service, whilst Felsted nurses volunteered their skills to the NHS, working on the frontline at local hospitals. Staff and pupils provided care packages for local care homes as well as food parcels and cards for local Almshouse residents. Our DT department responded to calls for PPE by upcycling some materials they had available to create visors for NHS workers at Broomfield Hospital.

Meanwhile a dynamic programme of home learning has been delivered to all pupils with a superb co-curricular programme of activity available to all in the community on felsted.org. Pupils from Year 1, 2, 6, 10 and 12 returned to school in June with some boarding in the final week, with safety and wellbeing the top priority at all times. Our Summer School went online this year and we look forward to welcoming all students back in September.



Parish Council Art Competition

This competition was judged by Graham Harvey (Chair of the PC) and Frances Marshall (Vice-Chair).

We were both very impressed by the high standard of paintings and photographs submitted which made our decisions incredibly difficult. Sadly there were no entries under the Child 10-16 photograph section so we have used that prize to award a second place in the child up to 10 painting section as this section had the greatest number of entries.

The results are as follows:



Child up to 10 - Painting

Henry Kershaw (age 10)

Nicole Powell (age 5)

Child up to 10 - Photograph

Jake Bishop (age 9)

Child up to 10 - 16 Painting

Azhar Tlevlessova (age 16)

Child up to 10 - 16 - Photograph

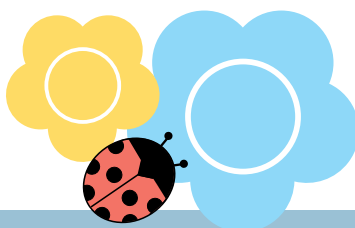
No entries

Adult Painting/Drawing

Roger Lawrence

Adult Photograph

Fiona Perrins



COMPETITION WINNERS!



Painting: Ashar Tlevessova - age 16



Photo: Fiona Perrins



Photo: Jake Bishop - age 9



Painting: Henry Kershaw - age 10



Painting: Roger Lawrence - age 85



Bees make a “beeline” for Borage

Some fields between School Road Rayne and The Flitch Way (near Fentons Bridge) in the east of the parish have recently turned an amazing purple colour. The crop is borage (*Borago officinalis*), also known as starflower. Some readers will be familiar with it in a glass of Pimms!

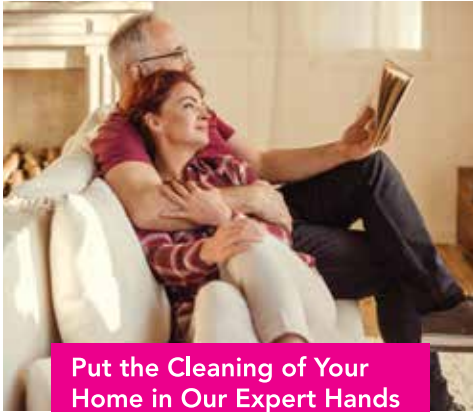
The mature plant produces small black seeds and the oil from the seeds contains the richest natural source of Gamma Linolenic Acid (GLA). Borage oil is used as a dietary supplement and can be bought over the counter at chemists and health food shops as Star Flower Oil. Other uses for borage include skin cream, pet food supplements, medicinal remedies (not all medically proven) and companion planting in gardens to protect or nurse tomatoes (with the claim of better flavour!), legumes, brassicas and strawberries. Borage is an environmentally friendly crop for farmers as its husbandry requires low inputs of fertiliser and pesticides.

The borage flower does not self-pollinate but requires insects, particularly bees. The honey produced from borage is clear and smooth, and local beekeepers are keen to bring hives to the fields to collect honey – a truly symbiotic relationship between farmer and beekeeper. Allegedly, borage honey was infused in the drinks of Crusaders to increase their courage!

If you are walking on the footpaths in the area you may wish to make your beeline to enjoy the colour and listen to the noise of the bees at work. They create quite a hum.

David Hall





Put the Cleaning of Your Home in Our Expert Hands

Imagine if you no longer had to find the time to clean during your evenings or weekends.

BRIGHT & BEAUTIFUL

A BEAUTIFULLY CLEAN HOME AND A BRIGHTER YOU

Call or email today to find out more

01376 319556

braintree@brightandbeautifulhome.com

brightandbeautifulhome.com

Flooring

Decking

Skilled Craftsmen

Garden Furniture

Consultation • Installation
Renovation • Personal Service

Other products too! Just ask.
01279 626389
andrewbanks.co.uk

Advertising in the

FELSTED
FOCUS
COMMUNITY MAGAZINE

Felsted Focus is delivered to approximately 1100 properties in the parish of Felsted and available on the parish council's website.

It is published by Felsted Parish Council every month and they are pleased to support local businesses by offering advertising space in this magazine.

Advertising rates, apart from the trade directory, are on a monthly or discounted yearly basis and are all in full colour.

TRADE DIRECTORY

£60 per year for a simple black and white text entry. Space is on a first come first served basis.

COLOUR ADVERTS

Per month

¼ page £25, ½ page £50,

Full page £100

Per year – 12 issues

¼ page £250, ½ page £500,

Full page £1000

We understand that times have been difficult for many businesses in the last few months and we will happily speak with you about payment schedules. Please contact us at felstededitor@gmail.com.



**Adult Learning
Within Reach**

Felsted Branch Autumn 2020

Starting in September - Online delivery only

World Music - We've got the Power

Bill Tamblyn

WEA Course Code: C2227502

MONDAY evenings LIVE and ONLINE from 7.30 - 9pm

Medieval Festivities & Entertainments

Kate Jewell

WEA Course Code: C2227503

THURSDAY Mornings LIVE and ONLINE from 9 - 10.30 am

Further info about cost, start date, content and how to access courses will be posted on the Felsted WEA website when published:

<http://wea-essex.org.uk/branches/felsted/>

For all enquiries:

Please ring the WEA SUPPORT TEAM on

0300 303 3464

quoting the WEA Course Codes above

Gardening Tips



We had well over 40 mm of rain in the first ten days of July. Gardeners and farmers noted that a fraction of these quantities would have been welcome in May – hindsight is everything! The lawn has grown strongly with the rain. The next few weekly cuts will be on a lower blade setting, with grass cuttings adding to the compost heap.

These last few years our lawn has thrived on lawn sand used in early spring at the start of growth. It missed out this year yet continues to do well with a minimum of management other than the regular cutting. We remain unconvinced of a more intensive lawn management regime.

Throughout August we shall continue to keep the edges of our three herbaceous borders trimmed and weeded on a 'needs must' regime.

Potatoes will deliver fresh spuds to accompany salads. Mange-tout peas and chard are ready to be harvested. Late planted courgettes are making progress and shall be ready by the middle of the month.

August Tips

- Layer strawberry runners. In a few weeks' time cut the con-necting stalk. Transfer these 'new' plants to a fresh bed or pots.
- Bend onion leaves over at the neck to encourage ripening of the bulbs.
- Keep side shoots on tomato plants ripped out. Continue to use a weak liquid feed. Tie back or remove leaves shading the fruit.



Judy Mackay

PUZZLE PAGE

Word Search

Flowers

E	M	N	A	I	L	H	A	D	B	Y	R	L	A
A	F	O	X	G	L	O	V	E	P	S	E	T	D
I	R	P	L	K	L	G	G	M	I	W	A	N	A
S	E	L	G	I	L	O	O	U	E	E	E	I	I
O	D	I	L	C	N	W	M	I	A	E	D	M	S
L	N	Y	L	I	C	O	A	N	P	T	A	T	Y
E	E	I	A	S	O	R	R	A	E	P	S	A	N
C	V	S	E	E	S	R	I	R	T	E	T	C	K
E	A	L	S	A	M	A	G	E	U	A	I	O	R
Y	L	O	I	L	O	Y	O	G	N	E	L	R	N
P	R	P	R	I	S	P	L	U	I	Y	B	M	W
A	K	I	I	O	E	E	D	N	A	O	E	I	R
T	A	N	S	Y	A	E	G	N	A	R	D	Y	H
A	E	K	M	A	S	U	N	F	L	O	W	E	R

PETUNIA
SUNFLOWER
ROSE
LILY
HYDRANGEA
DAISY
BEGONIA
GERANIUM
YARROW
ASTILBE

CELOSIA
IRIS
MARIGOLD
SWEET PEA
PINK
CATMINT
FOXGLOVE
DAHLIA
LAVENDER
COSMOS

Where is it?

Each month there will be a close up photograph of somewhere in Felsted. See if you can find it before the next edition where we will publish the answer!



Photo: Felix Sanchez del Rio

Last issue – Answer:

The post box is in Braintree Road, just outside the Abbeyfield care home.

Uttlesford Citizens Advice

Listening Line

For a friendly ear or a regular chat
whether you are feeling worried,
overwhelmed or you just want to vent!

Call **01799 618841**

or email **chat@uttlesfordcab.cabnet.org.uk**



**citizens
advice**

Uttlesford

**We're here for everyone to
support you through the
Coronavirus Pandemic**

LOCAL SERVICES DIRECTORY

BUSES

133 Network Colchester: 01206 877620
16 Stephenson: 01376 503050
other transport enquiries:
Traveline: 0871 200 22 33 or
www.travelinesoutheast.org.uk

CITIZENS ADVICE BUREAU

Braintree: 01376 324129
Great Dunmow: 01799 618840

COUNCILS

Essex County Councillor:
Simon Walsh: 01371 810451
Uttlesford District Council: 01799 510510
District Councillors: - Sandi Merifield
cllrmerifield@uttlesford.gov.uk
John Evans: cllrevans@uttlesford.gov.uk

Felsted Parish Council

Chairman: Graham Harvey
Clerk: Diane Smith

Parish Office: United Reformed Church Hall,
Stebbing Road, CM6 3JD
Office Tel: 01371 823071

Office hours: Mondays: 10:00 - 12:30
and Wednesdays: 16:00 - 18:30
email: clerk@felsted-pc.gov.uk
www.felsted-pc.gov.uk

DOCTORS

Drs Pitt, Tee & Stevens
The Surgery, Braintree Rd.
Tel: 01371 820410
Out of hours: 01371 872121

ELECTRICITY

and network emergencies:
Tel: 0800 7838838, 0800 0280247
and 08701963090 (daytime)

GAS

National Grid & Emergencies
Tel: 0800 111999

HOSPITALS

Broomfield including Casualty
Tel: 01245 362000

MEMBER OF PARLIAMENT

Kemi Badenoch
kemi.badenoch.mp@parliament.uk

MEMORIAL HALL

Lettings - Sheila Kill
Tel: 07926 377343
felstedmemhall@gmail.com

POLICE for our parishes

Essex Police Main Telephone Numbers:
Emergencies: 999
Non-Emergency Tel: 101

POST OFFICE

Felsted
Tel: 01371 820251
www.postoffice.co.uk/branch-finder

SCHOOLS

Felsted School:
Tel: 01371 822600
Felsted Preparatory School:
Tel: 01371 822610
Felsted Primary School:
Tel: 01371 820215
Flitch Green Academy:
Tel: 01371 822330
Ford End C of E Primary School:
Tel: 01245 237209
Email: admin@fordend.essex.sch.uk
Website: www.fordendschool.com
Helena Romanes School:
Tel: 01371 872560
Whipper-snappers Daycare Nursery
and Kids Club
Tel: 01371 821131

SEWERAGE

Anglian Water - sewerage
(not water, see below) Tel: 03457 145 145

WATER

Affinity sewerage
Supply problems and emergencies
Tel: 0345 3572407

TRADE DIRECTORY

ACER TREE SURGERY

Dunmow company.
Fully insured and NPTC assessed.
Email: acertreesurgery@gmail.com
Tel: 01799 598084 • Mob: 07958 184196

BEAUTY & HOLISTIC TREATMENTS

The Retreat, Dunmow
01371 878989
www.theretreatdunmow.co.uk

BINGS HALL

We are a small, friendly, family orientated care home in Felsted available for either respite or permanent care.
Contact Carla – Manager on 01371 820544
Mobile 07889 840274 or pop in to Bings and have a tour and a chat.

CLEAR SIGHT DRONES

Aerial photography. Have your property photographed by professional drone pilot. Services also include roof surveys, boundary line identification.
Tel. Clive 01371 820330 / 07979 054654
www.clearsightdrones.com

ELECTRICIAN.

BEEHIVE ELECTRICAL LTD.
All types of electrical work undertaken.
Tel: Neil on 07989 499983

FAMILY FUNERAL DIRECTORS

Daniel Robinson & Sons Ltd. 24 hr personal service. Pre-payment funeral plans.
Haslers Lane, Gt. Dunmow.
Tel: 01371 874518

FELSTED PROPERTY MAINTENANCE

Property maintenance and improvements. Free estimates given.
Tel: Clive Perrins 01371 820330
mob: 07979 054654
www.felstedpropertymaintenance.co.uk

FOOT CARE AT HOME

Sally Roberts Foot Health Practitioner.
Tel 01787 461753
email: sallyshomefootcare@gmail.com

GENERAL GEEK

IT Support in Your Home! Virus removal, laptop and desktop repairs.
Tablet and Mobile Phone Repairs, support and training.
Office: Tel: 0800 1337514 or
Engineer: mob: 07701065253

GOOD WITH WOOD

Flooring, Decking, Garden Furniture & more. Supply, installation, renovation. Free consultation.
andrewbanks.co.uk 01279 626389

HOMEOPATH

Experienced, fully qualified and registered homeopath based in Cock Green.
Contact Steph Sellers
Tel: 01371 823028. Mob: 07986456747
Email: stephsellers2000@gmail.com
Website www.stephsellershomeopathy.co.uk

KARATE AND KICKBOXING CLASSES,

Felsted Memorial Hall,
Thursdays from 5.30 pm.
Please see www.themartialartscentre.com

LAWN MOWER & GARDEN MACHINERY SALES, SERVICE & PARTS

Priory Lodge, Felsted.
Tel: 01371 820695

P. JUDGE CONSTRUCTION SERVICES

Brickwork, Repointing, Restoration and Hard Landscaping
Based in Bannister Green
Tel: 01371 499730/ 07734 862839
www.judgeconstruction.co.uk
email: info@judgeconstruction.co.uk

PHYSIO IN FELSTED

Experienced local Chartered Physiotherapist offering Ultrasound, Acupuncture, Manual Therapy, Exercise Therapy and Integrated Myofascial Release.
Tel: 01371 821063 • mob: 07958339574.
email physioinfelsted.co.uk

TRADE DIRECTORY

PROOFREADER

For businesses and students. Dunmow based.
CIEP trained - Chartered Institute of Editing
and Proofreading.
Contact Annie Deakins.
Mob: 07583 270046
Web: www.proofnow.co.uk.

ROOFING SERVICES R WHEELER

Slating, Tiling, Flat Roofs, Guttering,
Repairs, Chimney work, Local, Reliable,
Free Estimates.
email: rwheelerroofing@gmail.com
01371 811308 • mob: 07951 349837

SPELLBROOK DRIVEWAYS and LANDSCAPES.

Driveways, Patios and all landscapes.
Fully insured and guaranteed.
Tel: 01279 503936. Website:
www.spellbrookdriveways.co.uk
email: spellbrookdriveways@gmail.com

S. RAYNER - CARPENTER & JOINER

All carpentry & property maintenance.
Over 30 yrs experience in carpentry &
fitting kitchens. Call: 01371 820576
mob: 07768 914172. Free quotes.

TUTORING IN MATHS & SCIENCE

Most subjects offered to A level by
current examiner. Contact Dick Frost,
Tel: 01371 820824 • mob: 07909 526713
email: richard.j.frost@btinternet.com

WAGGY TAILS GROOMING

A caring and professional dog groomer
in Felsted (Hollow Road)
Contact Katia on 07738 595466

JD WALLIS BESPOKE JOINERY

Jon Wallis over 35yrs of experience
m: 07725 654121 t: 01371 821457
e: jonwallis73@gmail.com
w: www.jonwallisjoinery.com

WALDEN CHIMNEY SWEEPS

Clean, efficient, professional sweeping.
Guild of Master Sweeps Sweeping Certificates
issued. All appliances swept including wood
burners, open fires, Rayburn, Agas etc.
Tel: Paddy 07956 099788 or 01799 599981

WJH GRAB HIRE LTD

For muck away, grab away and delivery
of all types of aggregates for commercial
and domestic use.
Tel: 01371 238621 or 07758 160366

WINDOW CLEANER

with 20 years local experience.
Tel: Eddie Driscoll mob: 07941 776705 or
01245 360540

**The closing date
for content for
September's
magazine is the
13th August.**

**Please help support
us by sending articles
and pictures**

felstededitor@gmail.com

TAILORED HOME INSURANCE RIGHT DOWN TO THE FINEST DETAIL

A home is more than just bricks and mortar. That's why NFU Mutual Bespoke home insurance covers not only your home but also your beloved garden.

To discuss your high value home insurance,
call Chelmsford agency on 01245 421383
or search NFU Mutual Bespoke



NFU Mutual
BESPOKE INSURANCE

Our Agents are appointed representatives of The National Farmers Union Mutual Insurance Society Limited (No. 111982). Registered in England. Registered Office: Tiddington Road, Stratford upon Avon, Warwickshire, CV37 7BJ. Authorised by the Prudential Regulation Authority and regulated by the Financial Conduct Authority and the Prudential Regulation Authority. A member of the Association of British Insurers.
D-53D65BC5