

FELSTED

FOCUS

COMMUNITY MAGAZINE

ISSUE 27

SUMMER 2025

A FREE complimentary magazine or £1 where purchased

QUARTERLY



INCLUDED IN THIS ISSUE

- COUNCILS
- SCHOOLS
- CLUBS
- RECIPE
- EVENTS





The Fuzzy Mutt

Professional Dog Grooming Salon

New customers receive 10% off their first groom

Offer valid until August 31st 2025


Professional team of experienced and qualified groomers

Offering each customer a 1-2-1 individually tailored service

Fantastic facilities including a hydrobath massage with every groom

Teeth Cleaning service available

For all enquiries, please contact our Rayne branch on
01376773055 / 07946 315910

 info@thefuzzymutt.co.uk

 [@thefuzzymutt](https://www.instagram.com/thefuzzymutt)

 The Fuzzy Mutt

Unit 1B, Concord Farm, School Road, Rayne,
Essex, CM77 0SP



Note from the Editor

As I step into the role of editor for the Felsted Focus magazine, I'd like to begin by expressing my sincere thanks to my predecessor Janice for her dedication over the past few years. Her commitment to keeping the magazine running smoothly has been invaluable, and I know I speak for many when I say how much her efforts have been appreciated.

It's a real pleasure and privilege to take the reins of such an important part of village life. The magazine plays a unique role in bringing us together-sharing stories, celebrating local events, and keeping us all informed about what's happening in and around Felsted.

I'm excited about the opportunity to build on the magazine's strong foundations and to bring fresh ideas and energy to its pages. I'd love to hear from you—whether you have suggestions, stories, or simply something you'd like to see included. This is a community magazine, and I look forward to working together to ensure it continues to reflect the vibrant, welcoming parish that we call home.

felstedmagazine@gmail.com

Editorial Team:

Hope Alexander
felstedmagazine@gmail.com
Janice Ratcliffe
Sarah Gale
Janet Johnston
Richard Freeman
Roy Ramm

Graphic design and layout:

David Hardy
Astragraphic Design
info@astragraphic.co.uk

Print:

Paul Clark Printing

Parish Council:

07719 552174
www.felsted-pc.gov.uk



Felsted Friendship Club



We had an invitation from Felsted School in March to go for afternoon tea and music. The music was delightfully supplied by younger members of the school and we had a delicious tea afterwards.

At our AGM in April, after a lunch of fish and chips, our President Evelyn Woodley stepped down. She has been a member for over 35 years and been Treasurer and the supplier of birthday cards taken from her own artwork. Alison Moore stepped down as Chairman, after nine years, and at the end of the meeting stepped into Evelyn's shoes, becoming President. Sue King stepped down as Vice-Chair and Outings Organiser. All three ladies were given gifts.

The Secretary's Report was read by Sue King and the Statement of Accounts was presented by Carole Smith. Graham Kemp stepped up to deal with the elections of the new Committee, the members being as follows:- Diane Denny – Chairman, Carole Smith - Treasurer, Sue King - Secretary, Joyce White – Programme Secretary, Christine Middleton – Membership secretary, Anne Segal – raffle, Marian Martin and Rita Staines.

The speaker was M. Benning on Zeppelins in Essex.

One of the first duties as the new Chairman, Diane Denny welcomed Alison Moore as the new President. Alison then presented Diane with a new shield that two club members had paid for, to mark the Friendship Club's 70th anniversary.

At our May meeting, Aron Lane, gave us an inspirational talk about Little Havens Hospice at Benfleet who provide specialist care and support for babies, children and young people living with complex or incurable conditions. A place of love, fun, support and kindness, the hospice has to raise £7,250 a day to run. Club members collected £155 to send to the hospice.

Future meetings

- 18 July – Wildlife Photography – Tom Way
- 15 August – 'Around the world in 100 flowers' – Nick Dobson

If you are interested in coming along to one of our meetings, please do contact Diane Denny on **01376 583994**. The Club usually meets every third Friday of each month in the Memorial Hall at 2.15 pm, unless stated otherwise.

Charity No 270264



Felsted Royal British Legion



The Felsted British Legion club is 100 years old this year. An event was planned for the evening of Saturday 14 June when members gathered together for a celebration evening. The club is very busy and very well supported and always looking for new members - please just call in if you would like to join!

Our Branch is still busy with various military and non-military events and our Standard Bearer, Gary, is involved with various activities and parades. Looking ahead, we will hold our usual Remembrance gathering at the Felsted memorial on Sunday 9 November, for a wreath-laying ceremony - a Spitfire flyover is also planned. This is to be confirmed, but we are very hopeful.



Following along the commemorative note, thank you to everyone who took part in parish VE Day 80th celebrations, both in public and at home - including reader Teresa Falcone who crafted this fantastic piece of art.

Felsted WI

Spring is slowly moving into summer and the weather has become warmer at times, then a step back, tricking you with cooler temperatures! However, the flower tubs in the village are all in bloom and many thanks to the people who kindly water and keep them looking lovely.

The WI has had a busy time with five members' birthdays in May, all of whom were presented with pretty flower posies made by one of our talented ladies.

We also say a cheerio to our committee member, the lovely Alison Moore who has been our registration lady and the first friendly face to greet us on arrival.

We carry on through the summer with more plant growing challenges and outings all to come. This will be exciting now with all our new members.

Why not come and join us? You are assured of a warm welcome and good company.

Contact Penny Lewis - Tel No **07825 312829**



Felsted Memorial Hall

Hello everyone!

Here we are again, summer edition! We have had some lovely days so far haven't we. Though the gardens could do with a bit of rain.

It's business as usual at the Memorial Hall. Bookings for parties and events continue to healthily trickle in, so don't forget, if you have a celebration coming up and you want a village hall venue, go on the website and ring Sheila, our booking clerk.

We have had quite a bit of work done on the hall this summer. You may have noticed some workmen refurbishing the front entrance. The wood was rotten under the UPVC and it was all crumbling away. Alex and his team replaced it with new wood, new UPVC trim, painted the doors and soldier silhouettes. It looks really smart! The men also put up the new Friendship club plaque commemorating 70 years of meeting. What an achievement!

We have also had the ovens cleaned, and the boilers repaired and serviced. Apologies to groups that may have been inconvenienced while the work was being done, they tried to keep the noise to a minimum.

You may remember that we had some chairs donated by Foakes Hall last summer. Some of those chairs had seen better days! And there was an incident where a chair collapsed with a person on it. So we are looking at purchasing new chairs as some urgency. We have checked the remaining chairs and thrown out those showing signs of metal fatigue.

The drama group are planning a summer variety show in July, so watch out for posters. We would also like to do another Murder Mystery, as last years was so popular.

Thanks to all the team that keep The Memorial Hall ticking over and to the regular hirers for using the hall.

Well, until the Autumn, enjoy the rest of the summer!

Hazel Fox

Felsted Holy Cross Church



New Service

4pm on
Fourth Sunday

Flitch Green Community Hall
Suitable for All Ages

Four AT 4

United Reformed Church

United Reformed Church Burial Ground

When the churchyard of the Holy Cross Church in the centre of Felsted village reached its capacity and closed for further interments, under the terms of the Local Government Act 1972, (Section 215), responsibility for the future maintenance of the churchyard moved to the Parish Council.

However, that then left our community with no suitable resting place within the parish for interments. Therefore, whilst the responsibility for finding new places for interments is not specifically a Parish Council responsibility, Felsted Parish Council had begun to explore their options, including a Policy in the 2020 Felsted Neighbourhood Plan. Very generously, the United Reformed Church stepped in to offer their burial ground for intercultural internments.

Following this, an agreement between the Synod of the United Reformed Church and Felsted Parish Council was reached for the ownership and management of the lovely and peaceful URC burial ground in Chelmsford Road to be transferred to the Felsted Community Trust and this process is now underway.

While the 'legal papers' are being completed, the day to day management, administration and maintenance of the burial ground has now been passed to the parish. A member of the team has undergone specialist training in cemetery management to ensure a seamless transition provides facilities for parishioners of all denominations to be able to choose a resting place in the parish.

Graham Harvey Chair of Felsted PC said, "We are extremely grateful to the URC for helping us secure this important amenity for the benefit of our community for decades to come."

Parishioners can be assured that the Felsted Community Trust will maintain the burial ground to the same high standard that the United Reform Church has done for so many years..



Members of the URC and Parish Council meet to formally transfer the Burial Ground to the Parish via the Felsted Community Trust

Largely through a generous contribution from the parish council and by selling advertising space we have just about been able to deliver our magazine to over 1100 homes in the parish four times a year free of charge. We've asked before for a small contribution but only a handful - a baby-sized handful - make regular donations. So far this year, we've received just £35!

You often tell us how much you enjoy the FOCUS and we have some wonderful volunteers who give their time to write, photograph, layout, proof and even deliver for us but, unless we can generate more income, we may not be able to continue.

So, please help us to continue your magazine and contribute what you can, even just £5 per year per household would help to keep us going. Every penny will be spent on printing and delivery.

Please send your contribution to the Parish Clerk, URC Hall, Stebbing Road, Felsted, CM6 3JD or you can make a direct contribution to the Parish's bank account at the address below.

Barclays Bank

Sort code: 20-97-40 • Acc No: 00393274

Please mark your contribution 'FOCUS'

Cheques made payable to "Felsted Parish Council"



FELSTED ACCOUNTANT



Fixed free prices as per the website, you can pay monthly or ad-hoc, whichever suits.
Established 2009 and fully qualified.

Please phone Roy for a chat on

07702 555499 or 01371 532451

or visit:

www.sturgessaccountants.co.uk

The Manor House • Station Road • Felsted • CM6 3EZ



u3a
learn, laugh, live

Dunmow u3a is part of a UK-wide movement of local member-led interest groups that provide a wide range of opportunities to come together to learn for fun.

It is aimed at adults in Dunmow and the surrounding villages who are no longer in full time employment and have an interest in all things new: hobbies, challenges, sports or just making new friends.

Our member-led interest groups include:

- | | |
|--------------------|------------------------|
| ■ Art | ■ Line Dancing |
| ■ Book Clubs | ■ Luncheon Clubs |
| ■ Bridge | ■ Mah Jong |
| ■ Canasta | ■ Music Appreciation |
| ■ Cribbage | ■ Nature Walks |
| ■ Cycling | ■ Pickleball |
| ■ Family History | ■ Quilting & Stitching |
| ■ Flower Arranging | ■ Science & Society |
| ■ French | ■ Scrabble |
| ■ Garden Visits | ■ Sequence (the game) |
| ■ General Crafts | ■ Table Tennis |
| ■ Geology | ■ Walking |
| ■ Golf | ■ Whist |
| ■ Grow Your Own | ■ Wine Appreciation |
| ■ Italian | ■ Wool & Waffle |

To find out more, explore our website www.dunmow.u3asite.uk
email: membership@dunmowu3a.org.uk or visit our facebook page
(search for "Dunmow u3a") • Registered charity number: 1168310



Recipe: Japanese Pickled Onions

I recently discovered this preserve in a Japanese salad and loved the punch it added. You can add in chillis, ginger or other aromatics and increase the salt or sweetness as you wish.

If I use a part onion in cooking, I slice the remainder into this pickle.

Ingredients

1 red onion

¼ cup / 60ml rice vinegar/white wine vinegar

¼ cup / 60ml water

A generous pinch of salt

1 tsp sugar

Directions:

Clean and sterilise a jar.

Slice the red onion as thinly as possible.

Place all ingredients in the jar.

This can be eaten immediately, but is best served after 10 minutes. It can be stored in the refrigerator.





Parish Council Meetings

The monthly Parish Council meeting is held on the first Wednesday of every month (with the exception of August) in the URC Hall in Stebbing Road. Residents are very welcome to attend the Parish Council Meetings which commence with a fifteen minute public forum. This is an opportunity for residents to address the council and raise any concerns or ask questions. Alternatively, just come along to listen to the business of the council. Full details of meetings including dates, agendas and minutes can be found here: <https://felsted-pc.gov.uk/meetings/>

Local Parish Councils - Quarterly Meetings

Hosted by Felsted Parish Council, quarterly meetings are now taking place with representatives from Flitch Green, Little Dunmow, Rayne and Stebbing Parish Councils. Neighbouring parishes share many common interests / issues and these are explored at the quarterly meetings together with ways in which the parishes can help and support each other. The sharing of knowledge / experience and tackling local issues as a joint force is proving extremely positive. It has been lovely meeting our colleagues from across 'the borders' and we look forward to working with them on an ongoing basis.

Book Box - Chaffix

Until recently this much loved community resource had been looking rather neglected and untidy. Following an appeal in the last edition of the Focus the Parish Council were delighted when two residents came forward volunteering to give the box a much needed spring clean and to look after it going forward. Another resident kindly offered to pressure wash off the outside to get rid of the old and flaking paint. With all of this completed Felsted's wonderful Village Attendant gave the box a fresh coat of 'telephone box' red paint. The book box is now looking spick and span again. The Parish Council are so grateful to everyone involved and encourage residents to continue to make use of this lovely facility.



Website

Residents are encouraged to sign up to receive up to date Parish Council news by registering for updates on the PC website www.felsted-pc.gov.uk

Enter your email address to receive automatic notifications by email of all news articles as they are posted on the website.

Facebook

The PC now have a Facebook page. Please follow them at www.facebook.com/felstedpc to see up to date local information.

Heather Read Clerk to the Parish Council
Phone: **07719 552174** Email: clerk@felsted-pc.gov.uk



Gardens of Easton Lodge

THE GARDENS OF
EASTON LODGE

In July the gardens' volunteers have to work hard to keep the gardens watered, deadheaded and trimmed. After an extremely dry spring, followed by some rain in early June, we are hoping our well and water butts will be able to keep the flowers coming if July isn't wet. Another big July job is picking vegetables to sell to visitors and fruit to jam - each year there is more of this to do as we fill up the kitchen garden.

The roses and the lavender hedges are at their best in July, with lovely fragrance enjoyed by visitors and hopefully attracting butterflies too. In recent years we have added to our collection of roses, so the borders in Peto's Italian Garden are punctuated by their bright colours and the walled kitchen garden beds are filled with softer hues, together with grasses. This year we have started the huge job of replacing the lavender hedge beside the Italian Garden. We like to use cuttings so that we know the plants are all of the same variety. We have taken lots more cuttings in June, to make sure we can finish that job next year and maybe start replacing some of the hedges in the kitchen garden too.

Our Sunday Open Day on 20 July is the day when we help visitors remember the cost of war. Many men from the area lost their lives in World War I and many more from the Great Dunmow airbase, which was adjacent to the gardens in World War II. We have memorial trees in The Glade in the Gardens and there are moving memorials in the church at Little Easton. On the Open Day there will be 1940s songs performed by the Lancashire Belle and a range of exhibits to tell the stories of those eras, as well as local craft and produce stalls. For more information visit **www.eastonlodge.co.uk**

The gardens are also open every Thursday during July, with lots of games for families and of course homemade cakes and hot and cold drinks.

Jill Goldsmith



Citizens Advice

citizens
advice

Struggling? We're Here to Help

Being part of a safe, positive community is vital for our mental health and wellbeing. We thrive when we have strong connections with other people and supportive communities that remind us that we are not alone - so being able to quickly and easily access local support when times get tough can make a real difference.

Uttlesford Frontline is a free, easy-to-use online tool that helps you find local health and wellbeing services in your area. You can use Frontline to access advice and support from Citizens Advice in addition to a wide range of other local services including fall prevention services, community transport options, money advice, mental health services, heart health checks, carer support, child and family wellbeing services, energy efficiency advice, support for long term health conditions, including cancer, weight management services, drugs and alcohol programmes and more.

So, if you or someone you know is struggling, don't wait - visit uttlesfordfrontline.org.uk and take the first step toward getting the help you need.

If you can't easily access the internet, or need a little extra help, give our friendly advisers a call, or pop into the Library in Dunmow, Stansted and Thaxted or the Old Schoolhouse in Takeley. If we aren't there in person you can still speak to an adviser via our simple one-touch video link. Advice is always free and confidential.

Uttlesford Citizens Advice

Barnards Yard, Saffron Walden
CB11 4EB
01799 618840

help@uttlesfordca.org.uk

www.uttlesfordca.org.uk

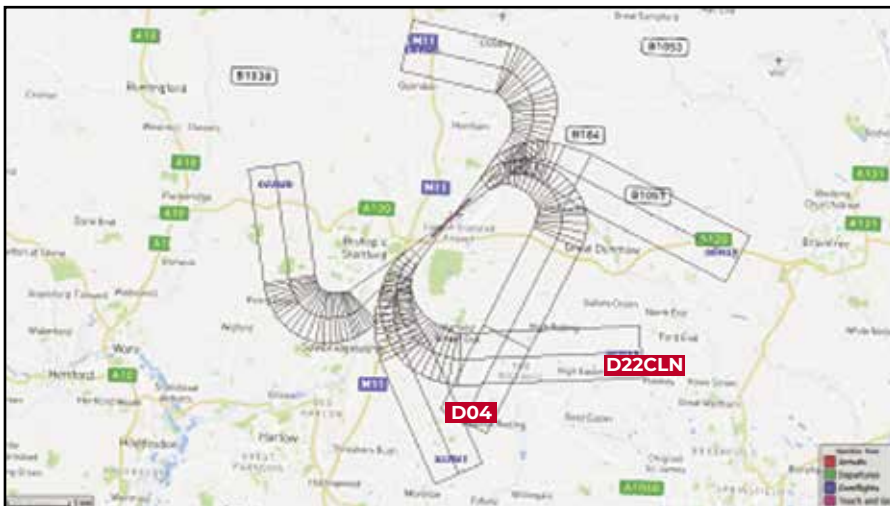
citizens
advice

DISTRICT COUNCILLORS' CORNER

Stansted Airport Overflying - Have the routes changed?

The answer is 'No', but it certainly feels as if they have. Many residents living in the northern parts of the parish in Stebbing Road, Gransmore, Watch House and Bannister Greens - areas which lie beneath the eastbound departure route known as Noise Preferential Route (NPR) D04CLN - have thought there might have been route changes.

That is one of six NPRs, two of which route via the radar beacon located at Clacton (CLN). The other CLN bound route (D22CLN) leaves Stansted Airport in a south westerly direction, with aircraft on that NPR passing over the Hallingburys before turning east in a track taking them overhead a sector lying between Hatfield Heath and Hatfield Broad Oak and onwards (see diagram).



Because the prevailing wind direction at Stansted, into which departing aircraft need to head, is generally from the west, the majority (70% or more) of departing aircraft leave via runway 22 rather than 04 and do not overfly our parish. However, when the wind direction is from the east the departing aircraft head into it.

The departure NPR envelopes shown in the image above are +/- 1.5 kms wide measured from the centre line; an aircraft flying within it is not 'off course'. Aircraft have to climb continuously and be at about 4,000 feet at the end of the depicted NPR sections. If they stay within the NPRs, aircraft are not subject to financial penalties.

DISTRICT COUNCILLORS' CORNER

However, in case of breach, a penalty is applied and the sums raised are paid into the airport's Local Community Benefit scheme. One example of such funding recently supported additional facilities introduced at Stebbing Tennis Club where a number of Felsted residents are members.

I think the greatest number of objections is to noise levels generated by larger and older aircraft which have noisier engines, such as 20 - 25 year old freighters. The noise generated by 747 and 777 aircraft of this type is particularly intrusive. It is possible to hear the engines' 'howl' from quite some distance away before they reach overhead. I believe most people would agree that the latest/smaller aircraft are significantly less noisy than these.

I represent Uttlesford District Council upon Stansted Airport Consultative Committee (STACC), a body representing a variety of different airport users and interested parties. Through STACC, I have been pressing the airport operators to discourage use of these noisy freight aircraft by charging them a higher tariff than at present, to encourage operators to bring in quieter engine types sooner.

On a further positive note, I was pleased to be able, through STACC, to request the airport to support the recently introduced 333 replacement bus service which passes to/from Stansted via the village. Consequently, they are providing top-up funding to the commercial operator who will now provide through the night/a full weekend service. This will be very useful to those of our residents who use the service to travel to work at the airport or passengers with early morning departures/late night arrivals.

As always, if you have any questions or issues to raise on this or another subject, I will be very pleased to hear from you. A detailed monthly report of my work in Uttlesford is submitted to the Parish Council and if anyone would like to receive a copy directly, please do get in touch!

John Evans

District Councillor

E: cllrevans@uttlesford.gov.uk

As the academic year progresses, we take pride in sharing the myriad of exciting developments and events happening at our school. It is our pleasure to inform our community about the successful Inclusion Review carried out by our local authority, which has confirmed our commitment to providing an inclusive educational environment for all our pupils. This recognition strengthens our resolve to ensure that every child, regardless of their background or additional needs, can thrive and achieve their fullest potential.

Our Year 6 students have now completed their SATs week, we are aware of the significance of this week for them. The culmination of years of hard work and dedication has led to this pivotal moment, and we are immensely proud of their achievements thus far. Our dedicated staff have worked tirelessly to equip them with the skills and knowledge necessary to succeed during this important assessment week. We extend our best wishes to the entire Year 6 cohort, whose resilience and determination serve as an inspiration to us all.

In other exciting news, we are delighted about the reopening of our school swimming pool. Each summer term, all our children from Reception to Year 6 participate in swimming lessons, enhancing both their water confidence and essential life skills. This year, we are especially thrilled to inform our community that the Parent, Teacher and Friends Association (PTFA) has generously funded a new auto-dosing system for our pool. This investment not only ensures a safer and cleaner swimming environment but also enables us to offer after-school fun sessions for our pupils, combining recreation and relaxation in an enjoyable setting.

As we look ahead to the second half of the summer term, we are so excited about the upcoming events planned for our children



and their families. Year 6 students will embark on their much-anticipated residential trip, which will undoubtedly foster lifelong memories and camaraderie. Our Year 6 production promises to be a highlight, allowing our talented pupils to showcase their creativity and hard work. Additionally, our whole school trip to Frinton is on the horizon, and we remain optimistic for good weather to complement a day of exploration and enjoyment outside the classroom. Our PTFA look forward to welcoming members of our community to our Summer Fete on Saturday 24 June between 1 and 4pm.

Our annual Sports Afternoon will also take place, allowing families to come together to support their children in various athletic ventures. A picnic will precede the activities, providing an opportunity for all to enjoy the sense of community we value at our school.

As the term draws to a close, our Drama Club, supported by the school choir, will stage a performance of 'The Boy, The Mole, The Fox and the Horse'. This beloved story, filled with poignant themes of friendship and empathy, will provide a fitting conclusion to a bustling term. Our pupils have been rehearsing regularly, and we cannot wait to share the results of their hard work with parents.

In summary, the remainder of the summer term is packed with events designed to enhance the educational experience of our children while fostering community spirit. We invite all families and community members to join us in celebrating the achievements of our young learners. Thank you for your continued support, and we look forward to sharing a memorable summer term together.

Bryony Collins



Stebbing Tennis Club

Hello from your friendly local club! For those not familiar with us, we are located to the east of Stebbing village, on Whitehouse Road - a 10 minute drive from Felsted.

Our inclusive club is perfect for beginners and advanced players alike, from age 4 and up. See details of our courts, adult, junior and club sessions below. Members may also book courts via our website to play independently - friends welcome for a small fee.

Coaching is overseen by Head Coach Mark Clark. Ashleigh Draper, currently completing her LTA Level 3 coaching certificate, is currently running our Juniors. We have a Level 2 Coaching Instructor, Graeme Knight, and two Level 1 Coaching Assistants, Milly Aves & Paige Bott. On the social front, our quiz night in April sold out, raising over £1,000 for club funds. These go towards facility maintenance and our new clubhouse, planned for 2026 in view of the rapidly expanding local population.

Upcoming events (open to members and non-members):

- 20 July - Mixed Tournament

Our website and social accounts are being revamped soon, so look out for more regular updates on these channels.

Adult Coaching

Mark Clark
07713 626239

- Monday 9-10am: Cardio Tennis
- Wednesday 9-10am: Cardio Tennis
- Wednesday 7-9pm: Squad Training (summer only)
- Thursday 9-11am: Ladies Tennis
- Friday 9-10am: Cardio Tennis
- Private Lessons



Join Us!

Junior Coaching

Ashleigh Draper
07966 502834

- Tuesday, Wednesday, Friday 4-7pm: Group Sessions for ages 4 to 16
- Junior League Matches
- Sunday afternoon Tournaments
- Holiday Camps



Adult Activities (ages 16+)

Thursdays 5.30pm onwards: Club Mix-In
Sundays 10.30am-1.00pm: Club Mix-In
League Teams (Essex Small Clubs, Halstead & District & Essex)
Friendly Club Tournaments & Championships
Socials and Fund Raising Events



A fun and welcoming club with 3 courts (2 floodlit)
Affordable Adult, Junior & Family memberships

 stebbingtennisclub.co.uk

Ladies Circle



Fun, Friendship & Fundraising in Felsted (or thereabouts!)

Ladies - are you looking to meet new people, try new things and give back to the community? Great Dunmow is now home to TWO vibrant women's social clubs that offer just that - and more!

It's not just about what you do - it's about who you do it with. Many members say the friendships they've made are the best part of joining.

Great Dunmow Ladies Circle is open to women aged 18-45, while Great Dunmow Tangent Club welcomes those over 45. Both are sister clubs to the Round Table organisation and share the same spirit of community and friendship.

Recent socials have included everything from meals out, cinema nights and paddle-boarding to comedy clubs, axe throwing and even drag bingo! There's something to suit every interest and budget. In addition to all the fun, both groups are passionate about giving back, regularly supporting local charities and community projects through creative fundraising events.

Ladies Circle meets every 1st + 3rd Thursday of the month, while Tangent gathers one Tuesday each month. Whether you're new to the area or a long-time local, both clubs offer a warm and welcoming space to connect with like-minded women.

You can come along to their social events with no obligation to become a member, so it's a great way to dip your toe in and get involved.

If you're looking to add more laughter, connection and purpose to your life, why not give Ladies Circle or Tangent a try?

For more information or to join an upcoming event, find us on Facebook: Great Dunmow Ladies Circle or Great Dunmow Tangent.
www.ladiescircle.co.uk



The HUB - Restaurant

Culinary Darlings at Sparlings: The Hub's New Restaurant Open

We're delighted to welcome a fresh addition to the Felsted food scene – The Hub has officially opened a brand-new restaurant at Sparlings Farm.

This elegant yet down-to-earth venue brings something special to our parish. The new space strikes a perfect balance: modern and stylish, yet full of rustic charm and the warm, family feel that has always defined the original Hub at Warner's Farm, Chelmsford.

The restaurant officially opened its doors on Thursday 12 June, following a soft launch the previous week, which the Focus had the pleasure of attending. The atmosphere was buzzing, and the space – set within the beautiful surroundings of Sparlings Farm – felt immediately welcoming.

It's clear that this is more than just a place to eat: it's somewhere to relax, catch up with friends, and enjoy food made with care. At the helm are Ruth and Lewis – a dynamic duo whose shared passion for local, honest food and great service shines through in every detail. Lewis, who joined as Head Chef and co-owner last year, brings decades of culinary experience, while Ruth continues to shape the friendly, community focused atmosphere that made The Hub such a success.

With a larger kitchen, more seating, and a menu full of seasonal, homemade dishes, the new Hub is already drawing locals and visitors alike.

Whether you're stopping in for a coffee, a hearty brunch, or a leisurely lunch with family, The Hub at Sparlings Farm is well worth a visit – and it promises to be a real asset to the village for years to come.



Step into Summer

Looking for a way to get moving, meet new people, and enjoy the lighter evenings?

The Great Dunmow Ladies Walking Group might be just what you need! This friendly and informal group meets every Wednesday evening at 6.30pm outside the Co-op in Great Dunmow.

Founded by local resident Harriet Jenkins, the group was inspired by a desire to get a bit more exercise and make new friends...and she's clearly not alone, as the group continues to grow each week.

Each walk is around 3 miles, with routes that vary to keep things interesting. The walk lasts about an hour and is completely free to join. All ages and abilities are welcome—children and dogs included!

There's no pressure, just a relaxed pace, good company, and the chance to explore the local area together. As the summer nights draw in, there's even been talk of a post-walk pub stop for those who have worked up a thirst!

For updates, route info, and to join the WhatsApp group, search **Great Dunmow Ladies Walking Group** on Facebook.

Lace up your trainers and come say hello!



Festival of British Archaeology 2025

Explore the Past at Cressing Temple Barns

The Festival of British Archaeology returns from 19th July to 3rd August 2025, offering an exciting chance to discover the UK's rich archaeological heritage. Organised by the Council for British Archaeology, this nationwide event features guided tours, excavation experiences, workshops, talks, exhibitions and more - designed to bring history to life for all ages.

Whether you're a history enthusiast or simply curious, the festival invites you to connect with the past through hands-on activities and expert insights.

This year also marks the launch of the very first Festival of Essex Archaeology & Heritage, hosted by Place Services at Essex County Council. Set at the beautiful and historic Cressing Temple Barns in Braintree, this free local festival celebrates the fascinating stories and discoveries unique to Essex.

Visitors can meet leading archaeologists, handle real finds, enjoy family-friendly activities, historical re-enactments, talks, guided tours, and more. It's a brilliant opportunity to learn about the county's heritage and the people working to preserve it.

Festival of Essex Archaeology & Heritage Date: Thursday 24 July, 10am - 5pm. Essex Event Location: Cressing Temple Barns, Witham Road, Braintree, Essex, CM77 8PD

More Info: www.archaeologyuk.org

Come along and unearth the stories beneath your feet!



The Hundred Parishes

We know that being outside is good for our wellbeing, both mental and physical. Besides the open countryside, we are fortunate in The Hundred Parishes to have parks and gardens where we can walk, sit and enjoy nature. I will mention just a few.

Bridge End Gardens in Saffron Walden was created by a local businessman and Quaker, Francis Gibson, in the 1840s. It is now managed by Saffron Waldon Town Council. Delights to explore include the hedge maze, rose garden and Dutch garden.

The Gardens of Easton Lodge in Little Easton were designed by Harold Peto in 1902, for the Countess of Warwick who lived at Easton Lodge.

In Sawbridgeworth, Pishiobury Park was redesigned by Capability Brown in the 18th century as an enclosed park. It is a registered historic park and includes wet woodland, grazed fields, an oak walk, meadows and part of the River Stort.

Birchanger Wood comprises 69 acres of ancient coppiced woodland, managed and owned by the Birchanger Wood Trust. Three miles of all-weather, wheelchair-friendly paths make it easy to explore.

In Stansted Mountfitchet, the Aubrey Buxton Nature Reserve is a 25 acre woodland with six man-made ponds. It was originally part of the park and garden of Aubrey Buxton's house. He was a co-founder of the World Wildlife Trust and donated the land to Essex Wildlife Trust. Today you can enjoy circular walks passing the ponds through the wood.

June is the month when many private gardens open to the public, even groups of gardens in Duxford and Ickleton – details appear on the What's On section of our website.

We hope you enjoy the summer and explore some of our wonderful parks and gardens.

Ken McDonald,
Secretary
www.hundredparishes.org.uk



Saffron Walden - Bridge End Gardens

The Hundred Parishes



Little Easton - Gardens of Easton Lodge



Sawbridgeworth - Pishiobury Park



Birchanger - Birchanger Wood



Stansted Mountfitchet -
Aubrey Buxton Reserve



Saffron Walden - the gardens of Audley
End House



Much Hadham - Henry Moore Foundation
in Perry Green

Summer Reading Challenge 2025 will soon be here!



The Summer Reading Challenge 2025, exploring the magical connection between storytelling and nature, will be running from Saturday 19 July to Saturday 6 September in all Essex libraries, with a special Early Joiners' Day on 12 September.

Children are asked to read six books or do a range of book-related activities. As they do this, they'll collect special stickers of our key characters and add them to their own Story Garden. Six stickers earn a certificate and medal.

We look forward to seeing your children in libraries over the summer!

www.libraries.essex.gov.uk/news/summer-reading-challenge-volunteering

Find out more about Story Garden.

Word Search

H O D L I J I Z E Y T Z Q Z V S T J A Q R O U B T
D P Q V D F P M E Q H O H V I V R L P F L E A X O
A Q V Q U F U W H F A H E A T W A V E A U G M S Q
H E Q S D M B U S G Z W Q V Y X Z T C E Q M X I F
Q R H D Q W G K Y Q A F L I P F L O P S L G T I V
G S H U U I A Y Y A R E H F S A E G N Q T H D T H
K Q I V E R R P G Z I S Y E J L J V S N J G V W N
Y D C G T I D I Y F A H Z G Z H Y L E E V S S U G
E L E P G L E M L Y I N W B F M P N G R A J P C K
O F C B L A N M Z G O C U G F E O U A E O S V O G
I W R G A K L S U N P A I A M G S X C T Y V I Q C
K L E Q S W X X W E U M F Y M T O T H F W A H D R
S C A T T B B C E E Y P V S O W B Q I J Q Y N E E
U T M A O D X N W L Z I M O F C I V F V L L K R S
N U D V N X N C V T M N T L T O M M H N A G V S Y
S U V S B Q G Z V Y B G W S H U K M B J T L F A S
H L P F U P Y F T Z R G B T F N W R J L X N I B E
I P I J R C K C T Y B F A I F T W F V K E C F R U
N G C G Y R U L R T O F R C G R T Q Z K K D U U D
E O N Q O I S H W L W C B E E Y L J G E J Y O Y P
M Q I E J C J N X E W K E F P S X W G D C W K N P
N K C L C K T F U M Q B C Z P I B E A C H N J Z R
L G V M J E S R U Y J T U P B D J Z H Q M F F K R
Q G Q I I T T X D F N T E Z P E J L N U T M R N G
Z E Y R F B A B Z D A D W D W X R T B X T T R Z S

Countryside	Glastonbury	Wimbledon
Pub garden	Flipflops	Sunshine
Heatwave	Festival	Hayfever
Ice cream	Barbecue	solstice
Seaside	Camping	Cricket
Beach	Picnic	Pimms

CM6 KITCHEN

MESSAGE
TO ORDER
**07838
728088**

BURGERS

IT AIN'T EASY BEING CHEESY beef patty, cheese, salad **£5**

THE PATTY WAGON double beef patty, double cheese, salad **£6.50**

BOB MARLEY beef patty, cheese, cajun spice, reggae sauce, salad **£5.50**

THE OINKSTER **£5.50**

beef patty, cheese, bacon, salad

THE PEPPER PIG **£7.50**

beef patty, pulled pork, cheese,
bbq sauce, salad

PLAIN JANE **£4.50**

beef patty, salad

THE CHICK MAGNET **£5.50**

battered chicken fillet, mayo, salad

CHICKY CHUNKS **£5**

6 chicken nuggets, fries + dip



**...plus veggie options
from £5.50**

KIDS MEALS ALSO AVAILABLE

All our beef patties are sourced from
Priors Hall Farm and served on a brioche bun

SIDES

PLAIN FRIES **£2.50**

CAJUN/PAPRIKA FRIES **£3**

MAC & CHEESE BITES **£3.50**

CHILLI & CHEESE BITES **£3.50**

ONION RINGS **£3.50**

MOZZARELLA STICKS **£3.50**

HALLOUMI FRIES **£4.50**

FREE SIDE
with orders
over £20

**FIND US AT
THE CHEQUER'S PUB
EVERY FRIDAY**

**FREE
delivery!**

FOR FULL MENU AND
SPECIALS SEE

f CM6 Kitchen





Felsted
Upholstery



From restoring cherished
furniture by hand to
creating custom footstools,
blanket boxes, and exquisite
curtains — every piece is
crafted on-site in Felsted
by a master upholsterer,
bringing timeless quality to
your home.



Contact Us

✉ karen@felstedupholstery.co.uk

🌐 felstedupholstery.co.uk

📷 [@felstedupholstery](https://www.instagram.com/felstedupholstery)

☎ 01371 532451 /
07821 361161



MORE THAN JUST BUSINESS SPACE....

Managed workspaces to let on a flexible and competitive term with easy access to London Stansted and Chelmsford.

- Office space
- Meeting rooms
- Business support

For details contact:

Email: contact@ongarbusinesscentre.co.uk

Phone: 01277 368200

Visit www.ongarbusinesscentre.co.uk/



ADR Services Landscape & Garden maintenance

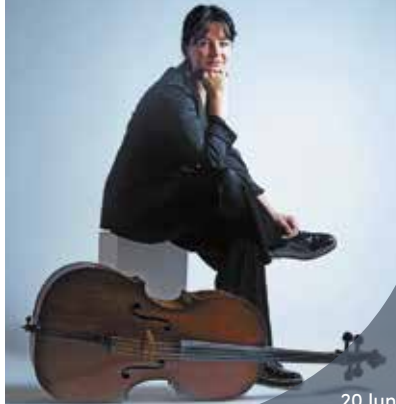
Experienced,
fully qualified
and insured.

Call Andrew Richards
07968778668
for fast and friendly
service.

adr.richards@btinternet.com

THAXTED FESTIVAL
• EST 1916 •

A Summer of Music Concerts



20 June to
13 July 2025



Live well, *your* way

Start your home care journey with
Home Instead® today.

- ♥ Home Help
- Personal Care
- 👤 Companionship
- ◆ Dementia Care

01376 319100

mike.sheehy@Braintree.HomeInstead.co.uk

Each Home Instead franchise is independently owned and operated. Copyright © Home Instead® 2021.

EDEN PRINT
Leave a Lasting Impression

- Leaflets • Posters • Booklets • Signs • Banners • Notepads
- Custom Shape Labels • Business Card • Letterheads
- Mugs • Greetings Cards • Raffle Tickets • NCR Pads • Plans



sales@eden-print.co.uk • www.eden-print.co.uk
 Unit 7 Rippers Court, Sible Hedingham, Essex CO9 3PY - 01787 469628

Old Park Meadow
 Natural Burial Ground



Burials and ash interments, funerals, services and wakes.

Adaptable to any ceremony and a completely personalised service.

Reserving a plot in advance is also possible.



01245 806332 oldparkmeadow.co.uk
 Coppice Lane, North End, Between Chelmsford &
 Great Dunmow, Essex, CM6 3PL

Anthony Cutler
Horticultural Gardening Services
Est. 2009



Capel Manor Award-Winning Horticulturist

Friendly service, attention to detail, and no contract required.
 One-off jobs or year-round care for your garden.

Garden tidy-ups and clearance, lawn cutting and care,
 tree and shrub pruning, bed and border planting, hedge cutting,
 turfing, weeding, cutting, propagation, and pressure washing.

Please call me to discuss your individual requirements:
07951 574212
www.facebook.com/AnthonyCutlerGardening

MICHAEL J WALSH

FUNERAL DIRECTORS

A DIGNIFIED AND CARING APPROACH

Michael J Walsh Funeral Directors is a local family business that has been providing a professional, caring, dignified and an affordable service to the Great Dunmow area for over 100 years.

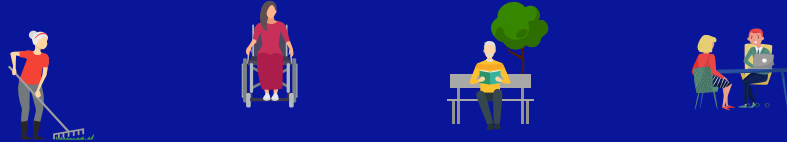
As well as providing traditional burial and cremation packages, in June 2022 we completed the building of Dunmow Crematorium, which we run alongside our established funeral services.

FUNERAL SERVICES FROM

£1125

Check out our cost estimator at
walshfunerals.com or phone us on **01371 856274**

DUNMOW CREMATORIUM



Are you looking to make changes
to improve your social, physical
and mental wellbeing?



Live Well Link Well is free and confidential support
of a non-medical nature. We can help you with:

- Healthy living
- Quitting smoking
- Physical and mental wellbeing
- Independent living
- Mobility and equipment
- Home adaptations
- Safety and security
- Looking after someone
- Social Inclusion
- Getting out and about
- Money worries



How do I access the support?

If you are aged over 18 and live in Essex

coop Funeral Directors

We are here when you need us **24/7**

Independent & Local Co-operative
Award Winning Customer Service
FREE Aftercare & Support Groups
FREE Online Memorials & Tributes
Inflation Proof Funeral Plans

2021 **FAIR**
FUNERALS

FPA
FUNERAL
PLANNING
AUTHORITY
REGISTERED



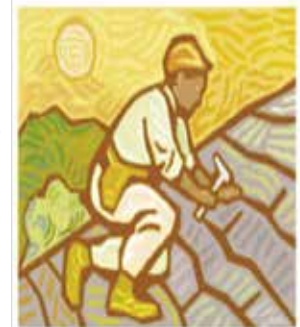
White Hart Way, Great Dunmow CM6 1WX

☎ **01371 875542**

funerals.chelmsfordstar.coop Part of Chelmsford Star Co-operative Society Limited



R. Wheeler
ROOFING SERVICES



**TILING | SLATING | LEADWORK | GUTTERING | FLAT
ROOFS | CHIMNEYS | ALL REPAIRS**

| Free Estimates | All work guaranteed |
| Over 30 years Experience |
| Honest & Expert Advice |

Home: 01371 811308 • Mobile: 07951 349837
RWheelerRoofing@gmail.com

A & W Gowers LTD

Specialist Joinery Manufacturers

A local family run joinery manufacturer, who provide bespoke joinery to the trade and public.

Whether it be the smallest mould, through to windows, doors, furniture or to the largest orangery.

Quotations are provided free based on architectural detail, photography, or sample copy. Additional services include CAD detailing, finishing, glazing and hardware supply.



***Windows
Doors
Conservation
Gates
Stairs***

***Fitted
Furniture
Kitchens
Wardrobes
Bookcases***

***...and much
more***

For free friendly advice and estimates please contact us at
www.awgowers.co.uk

Howe Street, Great Waltham, Chelmsford

Telephone: 01245 362737

Now selling eco-friendly stove briquettes

Plumbing Or Drainage Issues?

We've Got You Covered

PBD PLUMBING & PBD DRAINAGE

Providing Services In Felsted
& Surrounding Areas

- ✓ Highly Skilled & Experienced Team
- ✓ Free Quotes & Transparent Pricing
- ✓ Qualified & Insured
- ✓ Off Grid Drainage
- ✓ All Aspects Of Plumbing & Drainage From Emergencies to Full Renovations.

**Contact us for all of your
plumbing and drainage needs.**

Enquiries@plumbingbydodson.co.uk

0203 336 7362

www.plumbingbydodson.co.uk

www.pbddrainage.co.uk



LOCAL SERVICES DIRECTORY

Al-Anon

An organisation that supports families/
friends of problem drinkers
www.al-anonuk.org.uk/

BUSES

133 Network Colchester: 01206 877620
16 Stephenson: 01376 503050
DigiGo Bus: 03330 137138
www.digigo.uk
Traveline: 0871 200 22 33 or
www.travelinesoutheast.org.uk

CITIZENS ADVICE BUREAU

Braintree: 01376 324129
Great Dunmow: 01799 618840

COUNCILS

Essex County Councillor:
Martin Foley: 01799 510510
cllr.martin.foley@essex.gov.uk
Uttlesford District Council: 01799 510510
District Councillors: - Richard silcock
cllrilcock@uttlesford.gov.uk
John Evans: cllrevans@uttlesford.gov.uk

Felsted Parish Council

Chairman: Graham Harvey
Clerk: Heather Read
Parish Office: United Reformed Church Hall,
Stebbing Road, CM6 3JD
Office Tel: 07719 552174
Office hours: Mondays: 10:00 - 12:30
email: clerk@felsted-pc.gov.uk
www.felsted-pc.gov.uk

DOCTORS

The Surgery, Braintree Rd.
Tel: 01371 820410
Out of hours, John Tasker House: 01371 872121

ELECTRICITY

and network emergencies:
Tel: 0800 7838838, 0800 0280247
and 08701 963090 (daytime)

GAS

National Grid & Emergencies
Tel: 0800 111999

HOSPITALS

Broomfield including Casualty
Tel: 01245 362000

MEMBER OF PARLIAMENT

James Cleverly.
james.cleverly.mp@parliament.uk

MEMORIAL HALL

Lettings - Sheila Kill
Tel: 07926 377343
felstedmemhall@gmail.com

POLICE for our parishes

Essex Police Main Telephone Numbers:
Emergencies: 999
Non-Emergency Tel: 101

POST OFFICE

Felsted
Tel: 01371 820251
www.postoffice.co.uk/branch-finder

SCHOOLS

Felsted School:
Tel: 01371 822600
Felsted Preparatory School:
Tel: 01371 822610
Felsted Primary School:
Tel: 01371 820215
Flitch Green Academy:
Tel: 01371 822330
Ford End C of E Primary School:
Tel: 01245 237209
Email: admin@fordend.essex.sch.uk
Website: www.fordendschool.com
Helena Romanos School:
Tel: 01371 872560

Whipper-snappers Daycare Nursery
and Kids Club
Tel: 01371 821131

SEWERAGE

Anglian Water - sewerage
(not water, see below) Tel: 03457 145 145

WATER

Affinity Water
Supply problems and emergencies
Tel: 0345 3572407

LOCAL SERVICES DIRECTORY

ANDREW BANKS – Good with wood.

Flooring, Decking, Garden Furniture & more.
Supply, installation, renovation.
Free consultation. andrewbanks.co.uk
01279 626389

BEAUTY & HOLISTIC TREATMENTS

The Retreat, Dunmow Tel 01371 878989
www.theretreatdunmow.co.uk

FAMILY FUNERAL DIRECTORS

Daniel Robinson & Sons Ltd. 24 hr personal
service. Pre-payment funeral plans.
Haslers Lane, Gt. Dunmow. Tel: 01371 874518

FELSTED PROPERTY MAINTENANCE

Property maintenance and improvements.
Free estimates given.
Tel: Clive Perrins 01371 820330
mob: 07979 054654
www.felstedpropertymaintenance.co.uk

HOMEOPATH

Experienced, fully qualified and registered
homeopath based in Cock Green.
Contact Steph Sellers
Tel: 01371 823028. Mob: 07986456747
Email: stephsellers2000@gmail.com
Website www.stephsellershomeopathy.co.uk

P. JUDGE CONSTRUCTION SERVICES LTD

Brickwork, Repointing, Restoration
and Hard Landscaping
Based in Bannister Green
Tel: 01371 499730/ 07734 862839
www.judgeconstruction.co.uk
email: info@judgeconstruction.co.uk

P. JUDGE CONSTRUCTION SERVICES LTD

Gutter clearance service with full camera
inspection. Fully Insured. Work carried
out safely from the ground. 01371 499730 /
07734862839 www.judgeconstruction.co.uk

PHYSIO IN FELSTED

Experienced local Chartered Physiotherapist
offering Ultrasound, Acupuncture,
Manual Therapy, Exercise Therapy
and Integrated Myofascial Release.
Tel: 01371 821063 · mob: 07958339574.
email physioinfelsted.co.uk

RPT Professional Chauffeur Service

Based in Hartford End Felsted, RPT offer
a bespoke professional chauffeur service
tailored to meet your individual travel
requirements.
www.rptchauffeurservice.co.uk
01371 829353 · Mob: 07836 749367

PLUMBING BY DODSON LIMITED

Your local plumbing experts.
Friendly, fully qualified, insured and experienced.
Covering emergencies to routine and specialist
plumbing works
www.plumbingbydodson.co.uk
Call Nick on 0203 336 7362

ROOFING SERVICES R WHEELER

Slating, Tiling, Flat Roofs, Guttering,
Repairs, Chimney work, Local, Reliable,
Free Estimates.
email: rwheelerroofing@gmail.com
01371 811308 · mob: 07951 349837

S. RAYNER - CARPENTER & JOINER

All carpentry & property maintenance.
Over 30 yrs experience in carpentry &
fitting kitchens. Call: 01371 820576
mob: 07768 914172. Free quotes.

TUTORING IN MATHS & SCIENCE

Most subjects offered to A level by
current examiner. Contact Dick Frost,
Tel: 01371 820824 · mob: 07909 526713
email: richard.j.frost@btinternet.com

WINDOW CLEANER

with 20 years local experience.
Tel: Eddie Driscoll mob: 07941 776705
or 01245 360540



Tool & Equipment Hire

Open Mon-Fri 7:30 - 17:00



Access Equipment - Plant - Power & Lighting - Electrical Tools -
Gardening Equipment - Petrol/Diesel Generators - Cement Mixers
- General Building & Decorating - Drilling, Breaking & Fixing



**Our Full Range Of Equipment Is
Available For Hire Now**

Weekend Hire Rates Available

Unit 4 | Hoblongs Industrial Estate |
Chelmsford Road |

Great Dunmow | CM6 1JA
01371 700727 |



SCAN ME



727 Tool Hire